

State of Wyoming Corner Record

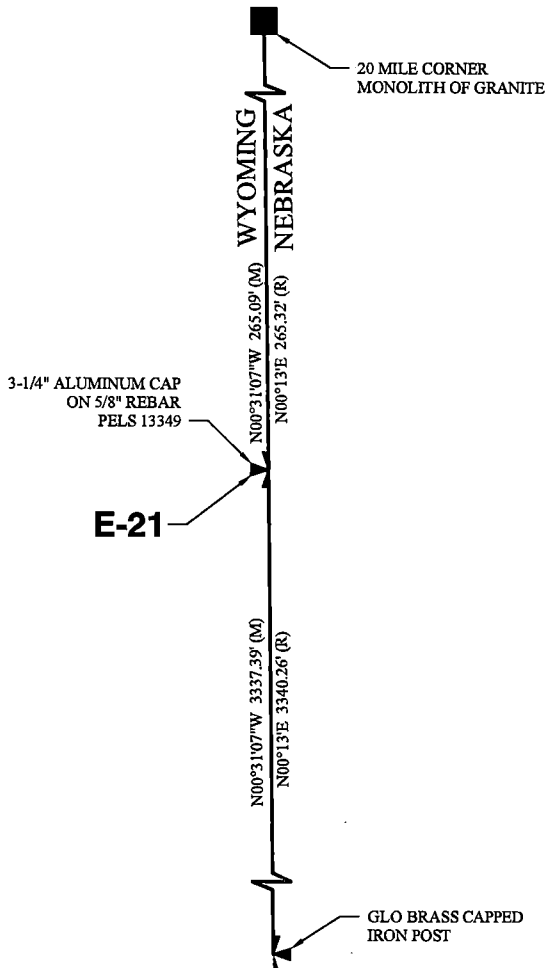
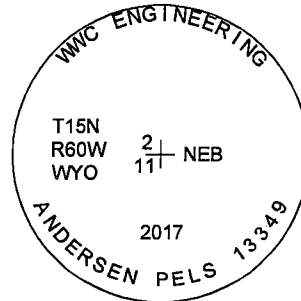
(In compliance with the CORNER PERPETUATION AND FILING ACT, Wyoming Statutes, 1997, Section 33-29-140, et seq., and the Rules and Regulations of the Board of Registration for Professional Engineers and Professional Land Surveyors)

Reverse side of this form may be used if more space is needed.

Record of original survey and citation of source of historical information (if corner is lost or obliterated.) Description of corner monumentation evidence found and/or monument and accessories established to perpetuate the location of this corner. Sketch of relative location of monument, accessories, and reference points with course and distance to adjacent corner(s) (if determined in this survey). Method and rationale for reestablishment of lost or obliterated corner.

EVIDENCE RECORD: 1908 GLO Survey: North N00°13'E, 75.85 chains. Set an iron post 3' long, 2 3/4" diameter, 26" in the ground, surmounted by brass cap for the closing corner of sections 2 and 11, T.15N., R.60W., Wyoming.

EVIDENCE FOUND: January 2018: Iron post from 1908 GLO survey not found. Set a 3 1/4" aluminum cap marked as shown on a 5/8" rebar, 24" long, 3" below ground surface, at single proportionate position between found 20 Mile Corner and closing corner of sections 11 and 14, T.15N., R.59W., Nebraska.



LEGEND

- FOUND MILE CORNER AS NOTED
- FOUND CLOSING CORNER NEBRASKA AS NOTED
- FOUND CLOSING CORNER WYOMING AS NOTED
- (R) RECORD (1908 GLO SURVEY)

BASIS OF BEARING:
BEARINGS AND DISTANCES ARE BASED ON A WYOMING STATE PLANE COORDINATE SYSTEM, NAD 1983, EAST ZONE, GRID DISTANCES



Date of Field Work: January 11, 2018

Office Reference: 2017-135

CROSS INDEX DIAGRAM

	1	2	3	4	5	6	7	8	9	10	11	12	13	14	15	16	17	18	19	20	21	22	23	24	25		
A																											A
B																											B
C		6			5				4					3					2						1	C	
D																										D	
E																										E	
F																										F	
G		7			8				9					10					11						12	G	
H																										H	
J																										J	
K																										K	
L		18			17				16					15					14						13	L	
M																										M	
N																										N	
O																										O	
P		19			20				21					22					23						24	P	
Q																										Q	
R																										R	
S																										S	
T		30			29				28					27					26						25	T	
U																										U	
V																										V	
W																										W	
X		31			32				33					34					35						36	X	
Y																										Y	
Z																										Z	

Land Surveyor / Firm / Address
Clint E. Andersen

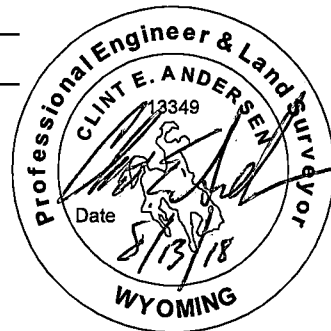
WWC Engineering

51 N. 15th Street, Suite 1

Billings, MT 59101

Telephone: (406) 894-2210

This corner record was prepared by me or under my direction and supervision.
SEAL & SIGNATURE



Corner Name: Northeast Corner Section: 11 T 15N R 60W ; 6TH P.M. Cross-Index No.: E-21
SBRPEPLS/PLSW: March 1994; PLSW January 1998